

HARDWOOD

DELRAY
engineered



17052 Reef

	US Units	Metric Units
Style Number	HW493	
Construction	Engineered	
Species	Birch	
Nominal Overall Thickness	3/8"	9.5 mm
Nominal Width	5"	127 mm
Finish	UV Aluminum Oxide	
Gloss Level	20%	
Surface Texture	Scraped	
Edge Description	Micro Bevel	
End Description	Mb	
Profile	Tongue And Groove	
SQFT per Carton	29.53 sq ft	2.74 sq m
SQFT per Pallet	1181.2 sq ft	109.73 sq m
Installation Methods	Nail, Staple, Glue, Floating	
Installation Grade	All Levels Of The Home	
Variation	Moderate	
Environmental	Cradle-to-Cradle Certified GREENGUARD® Certified	
Radiant Heat Approved	Yes	
Residential Warranty	50 Years	
All measurements are nominal.	Cartons may include random lengths.	

Features

In this "artisan-crafted" style the scrape combined with gentle chatter, creates a versatile product that has refined, rustic appeal. Subtle birch grain adds to the casual charm, as does the matte finish, which gives a natural, oil-rubbed appearance—a hot designer look! Made with a 6-ply plywood core, planks have micro-beveled ends and edges and come in random lengths—13" to 47 1/4".

Suggested Adhesive

Style Name	Style Number
35MC	HS105

Trim Pieces length: 78" (*Overlap Reducer and Overlap Stairnose are designed for floating installations only. These items are non-stocking - but are available through a quick-ship program. Delivery should take approximately 2 to 3 weeks.)



HRH38
Flush Reducer



HROH8
*Overlap Reducer



HSH38
Flush Stairnose



HSOH8
*Overlap Stairnose



HCH38
Threshold / Carpet
Reducer



HWTMH
T-Molding



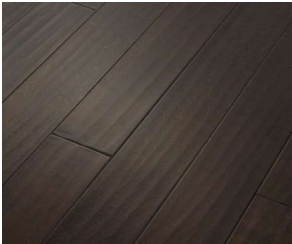
HWQRO
Quarter Round

Trim images are for illustration purposes only. Actual dimensions will vary.
Contact the Shaw Information Center for additional details: 800-441-7429.

Colors



460 Surfside



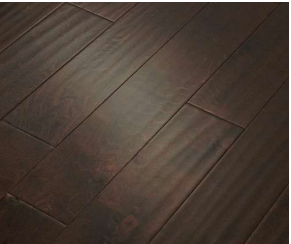
493 Bayfront



529 Oceanside



627 Burnside



698 Conway



1023 Crescent Beach



2022 Parasail



5034 Windsurf



11071 Seagrass



17051 Low Tide



17052 Reef